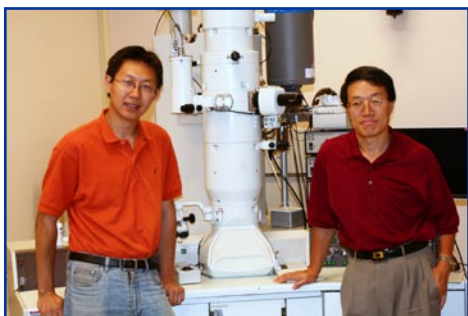


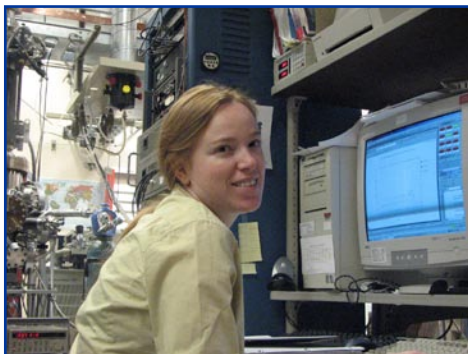
Summer Research Institute



Gain experience with advanced experimental techniques



Work with Experts



Learn cutting-edge theoretical techniques



Enjoy living in a vibrant community



The Pacific Northwest National Laboratory

Environmental Molecular Sciences Laboratory are located in north Richland, Washington. To learn more about the area, visit the Institute's Website at http://www.pnl.gov/si/richland_location.stm.

For more information contact:

Nikki Avery, Administrator of Summer Research Institute in Interfacial and Condensed Phase Sciences

Pacific Northwest National Laboratory

P.O. Box 999, MSIN K9-44

Richland, WA 99352

Phone: (509) 372-6996

Fax: (509) 372-4747

Nikki.Avery@pnl.gov

Homepage: <http://www.pnl.gov/si/>

PNNL-SA-58332 — December 2008



Pacific Northwest
NATIONAL LABORATORY

Summer Research Institute



Interfacial and Condensed Phase Sciences

FUNDAMENTAL &
COMPUTATIONAL SCIENCES

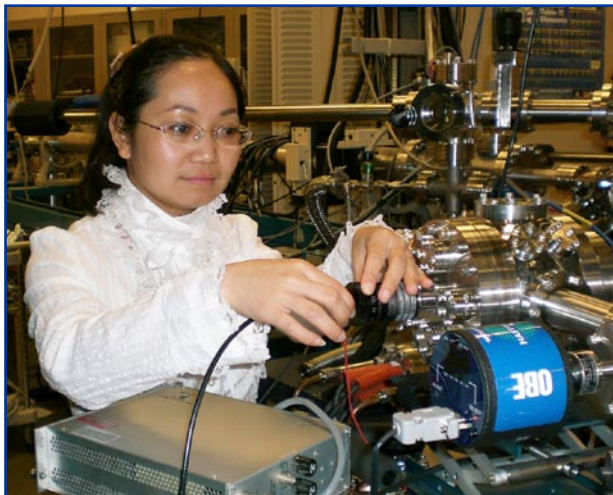
Summer Research Institute

The Pacific Northwest National Laboratory (PNNL) in Richland, Washington, is inviting qualified applicants for a summer research experience in Interfacial and Condensed Phase Sciences (<http://www.pnl.gov/si/>).

This is an advanced program that focuses on

- Graduate students (M.S. and Ph.D.)
- Postdoctoral Fellows
- University Faculty.

Participants work alongside internationally known scientists on research projects. Projects are structured to maximize the participant's training and experience with advanced theoretical and experimental techniques.



Work on high-quality instruments.

Interfacial and Condensed Phase Sciences are important in nearly every scientific discipline. Technology and engineering of today's world depend to one degree or another on our ability to understand and manipulate condensed phases and interfacial processes.

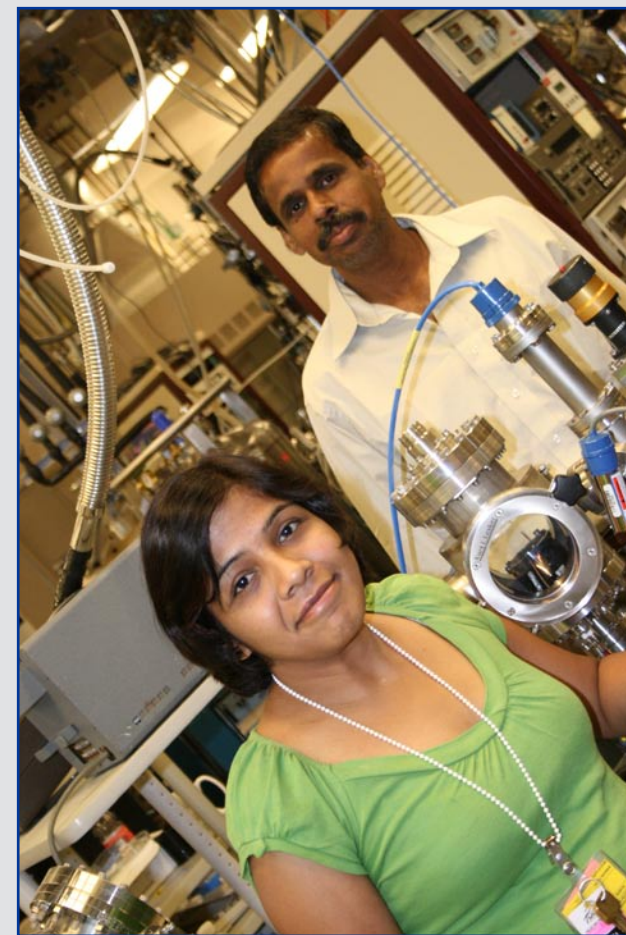
Institute Dates and Application Deadline

Appointments for the Summer Research Institute will occur from **May 2009 through September 2009**. Start and end dates are flexible depending on the applicant's school or work schedule.

All applicants must contact a PNNL scientist who may consider becoming a host-mentor before applying. Application deadline is **February 15, 2009**. Early applications are encouraged. A maximum of 15 applicants will be accepted. Researchers in PNNL's Chemical Sciences Division will review all applications and proposed research.

Financial Support

Candidates selected to participate in the Summer Research Institute usually receive support for travel and local living arrangements through their PNNL host-mentor. Any additional information about financial support is provided on the Institute's homepage.



Learn from internationally recognized experts.

Eligibility

Candidates will be evaluated based on their applications, letters of recommendation, proposed research, and resumes. Interested candidates are encouraged to contact Nikki Avery, Administrator for the Institute. Participants must be U.S. citizens or foreign nationals with appropriate visa documentation. As a condition of acceptance, all participants will sign an agreement documenting program and other expectations. Check out the Institute's website at <http://www.pnl.gov/si/>.