

PNNL-31971

Modeling particulate generation during high energy explosive events

September 2021

Manish Shrivastava
Sivanandan Harilal

DISCLAIMER

This report was prepared as an account of work sponsored by an agency of the United States Government. Neither the United States Government nor any agency thereof, nor Battelle Memorial Institute, nor any of their employees, **makes any warranty, express or implied, or assumes any legal liability or responsibility for the accuracy, completeness, or usefulness of any information, apparatus, product, or process disclosed, or represents that its use would not infringe privately owned rights.** Reference herein to any specific commercial product, process, or service by trade name, trademark, manufacturer, or otherwise does not necessarily constitute or imply its endorsement, recommendation, or favoring by the United States Government or any agency thereof, or Battelle Memorial Institute. The views and opinions of authors expressed herein do not necessarily state or reflect those of the United States Government or any agency thereof.

PACIFIC NORTHWEST NATIONAL LABORATORY
operated by
BATTELLE
for the
UNITED STATES DEPARTMENT OF ENERGY
under Contract DE-AC05-76RL01830

Printed in the United States of America

Available to DOE and DOE contractors from
the Office of Scientific and Technical
Information,
P.O. Box 62, Oak Ridge, TN 37831-0062
www.osti.gov
ph: (865) 576-8401
fax: (865) 576-5728
email: reports@osti.gov

Available to the public from the National Technical Information Service
5301 Shawnee Rd., Alexandria, VA 22312
ph: (800) 553-NTIS (6847)
or (703) 605-6000
email: info@ntis.gov
Online ordering: <http://www.ntis.gov>

Modeling particulate generation during high energy explosive events

September 2021

Manish Shrivastava
Sivanandan Harilal

Prepared for
the U.S. Department of Energy
under Contract DE-AC05-76RL01830

Pacific Northwest National Laboratory
Richland, Washington 99354

Introduction

Laser produced plasmas are used to simulate high energy events and are useful for a variety of applications e.g. in industrial sectors, such as semi-conductor manufacturing, as well as medical, environmental, and energy sectors. Particulate generation in laser produced plasmas is related to key features of the plasma: temperature and pressure evolution during plume expansion, plasma chemistry etc. Several uncertainties persist

in relating initial high energy events (~microseconds) to particulate formation that happens as the plasma cools and evolves (~milliseconds).

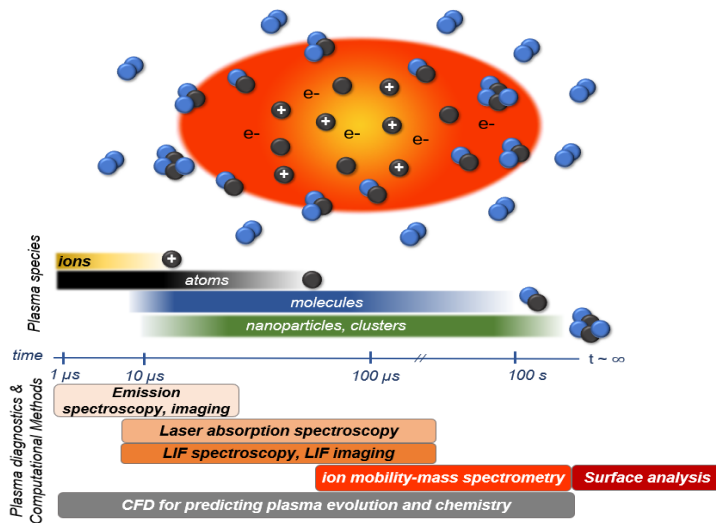


Figure 1: Illustration of plasma chemistry processes that evolve from atoms/diatoms to molecules, nanoparticle clusters formation within microseconds to longer timescale particulate formation and growth which are not understood well.

Approach: We developed and applied computational fluid dynamic (CFD) techniques to understand the initial stages of plasma formation and evolution of temperature and pressure fields after laser ablation.

Results

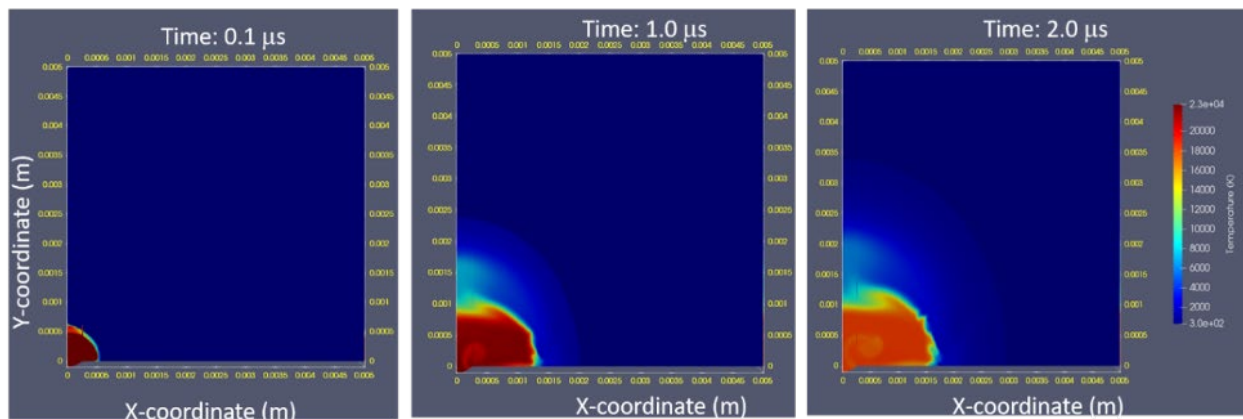


Figure 2: Snapshots of temperature (K) fields within Al plasma evolution during the first two microseconds simulated using the CFD OpenFOAM toolbox. The initial physical conditions are selected based on ns laser-produced plasma from an Al target. Modeling was performed in an inert Ar environment at 1 atmosphere.

An example of the time sequence of temperature evolution of laser-produced Al plasma in an inert environment is shown in Fig. 2. The selection of initial conditions was based on previous experimental results. The CFD simulation clearly shows that the plasma physical properties attain favorable conditions for plume chemistry within a short time after plasma onset. However, the plasma simulation involving plume chemistry is very complicated. CFD simulations can be extended to predict the kinetics of thermo and plasma chemistry by including the plasma-chemical reaction routes and by considering various reversible reactions with respective temperature-dependent rate coefficients. This work developed a modeling framework using CFD that will be used to investigate multi-component plasma chemistry conditions and ultimately connect to nucleation and particulate formation as the plasma cools down.

Impacts

This work brought together atmospheric scientists (M. Shrivastava) and NSD scientists (S. Harilal) to address a complex multidisciplinary problem that could benefit by application of integrated-modeling measurement techniques. A proposal using aspect of this work was submitted to DOE Office of Science fusion energy this year by S. Harilal. Additional proposals based on this work will likely be submitted in the near future, thus potential generating multi-disciplinary collaborations and funding.

Pacific Northwest National Laboratory

902 Battelle Boulevard
P.O. Box 999
Richland, WA 99354
1-888-375-PNNL (7665)

www.pnnl.gov